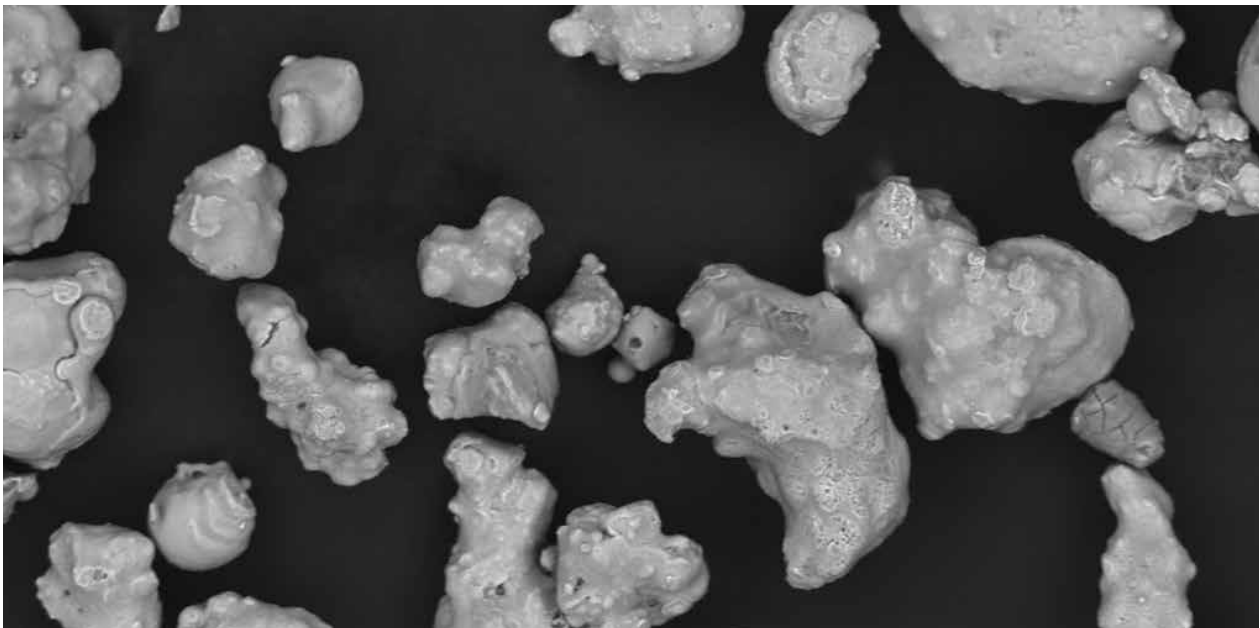


Welding

FERELET Pometon Powders for welding

Metal powders POMETON FERELET are used for the production of arc-welding consumables. The broad range of grades and composition available on the Pometon Ferrous and non Ferrous powders, covers the whole need for coating of welding electrodes, Flux cored wires and Metal cored wires market. RI types are recommended for medium and high efficiency basic electrodes. MT Types are recommended for very high efficiency basic or rutile electrodes. Grade 3.7C is most appreciated for high resistance steel, while 3.7 is designed for stainless steel. Pometon range of light copper powder is also used in specific welding applications. Check the website or contact us at sales@pometon.com



STANDARD GRADES

Physical properties		FERELET					
		MT 425/3.0	MT 425/3.7	MT 425/3.7 C	RI 425/3.0	RI 425/3.7	RI 212/2.9
Chemical properties	Ot %	1,10 max	0,90 max	0,90 max	0,25 max	0,25 max	0,25 max
	C %	0,050 max	0,050 max	0,09 - 0,15	0,010 max	0,010 max	0,010 max
	S %	0,015 max	0,015 max	0,015 max	0,010 max	0,010 max	0,010 max
Flow rate	s/50 g	34 ± 5	24 ± 2	25 ± 2	34 ± 5	23 ± 2	27 ± 3
Apparent density	g/cm ²	3,00 ± 0,20	3,70 ± 0,20	3,70 ± 0,20	3,00 ± 0,20	3,70 ± 0,10	2,90 ± 0,10
Particle Size % cum.	> 600 µm	0	0	0	0	0	
	425 µm	5 max	5 max	5 max	5 max	5 max	
	300 µm						0
	150 µm						15 max
	63 µm	85 min	85 min	80 min	85 min	85 min	65 - 75